
In My Opinion

- 7 Environmental Sustainability and Deep Information: A Response
Geoffrey Dutton

Refereed

- 10 GIS Development Process: A Framework for Considering the Initiation, Acquisition, and Incorporation of GIS Technology
Carrie S. Anderson
- 27 Case-Based Reasoning and Spatial Analysis
Alec Holt and George L. Benwell
- 37 A Quality Function Deployment Framework for Effective Transfer of AM/FM/GIS Information Technologies to Small Communities
Yahya M. Khawaja and Colin O. Benjamin

Horwood Critique Articles

- 51 A New Model for Handling Vector Data Uncertainty in Geographic Information Systems
Gary J. Hunter and Michael F. Goodchild
- 58 Capacity Expansion Modeling of Water Supply in a Planning Support System for Urban Growth Management
Hyong-Bok Kim and Lewis D. Hopkins

Features

- 68 To Russia, With Love
Brenda Haskins
- 71 When Laws Collide: Dangers of Government Software Purchases
David R. Bowen and Robert C. Dorf
- 75 Renewable Energy and GIS: Three Wisconsin Case Studies
Kent Withrow, Don Wichert and Dan Moran
- 80 Digital Orthophotography Consortium: A Multi-County Solution for Wisconsin
Nancy von Meyer

Feature Map

- 87 Massachusetts Water Resource Authority: A Water-Quality GIS Showcase

Reviews

Books

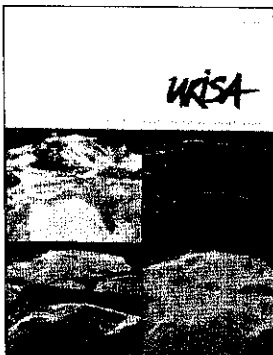
- 92 Information Technology Standards-Quest for the Common Byte
(by Martin Libicki, Butterworth-Heinemann)
Peter Croswell
- 94 Struggling for the Soul of GIS
(A Review of "Ground Truth: The Social Implications of Geographic Information Systems." John Pickles (ed.), Guilford Press)
Ric Vrana
- 98 Sharing Geographic Information
(Harlan J. Onsrud and Gerard Rushton (eds.), Center for Urban Policy Research)
Zorica Nedovic-Budic
- 102 Aerial Mapping: Methods and Applications
(by Edgar Falkner, CRC Press)
R.R. "Sky" Chamard

Software

- 103 ArcView 2.1 for Windows
Bryan Bowers

Index

- 107 Author Index
- 111 Subject Index
- 118 Guidelines for Manuscript Submission



On the Cover

Four isometric views of a ski area in western Dane County, Wisconsin illustrating the steps involved in digital orthophoto creation. Clockwise from upper left: view 1 is the orthophoto of the area; view 2 is the digital terrain model (DTM); view 3 is a grid developed from the DTM; view 4 shows 10-foot contours.

These views were developed on a 6800 series intergraph workstation using Intergraph Image Station Imager (ISI) and Terrain Modeler (MSM) software. The orthophotography was prepared by Ayres Associates in Madison, Wisconsin as part of a seven-county digital orthophotography consortium project in southwestern Wisconsin. For more information about the consortium and the digital orthophotography process, see p. 80.